



Diamantina

LOGAN RESERVE

House and Land Package



4 | 3 | 2

\$568,034

Hudson 261

LOT 3

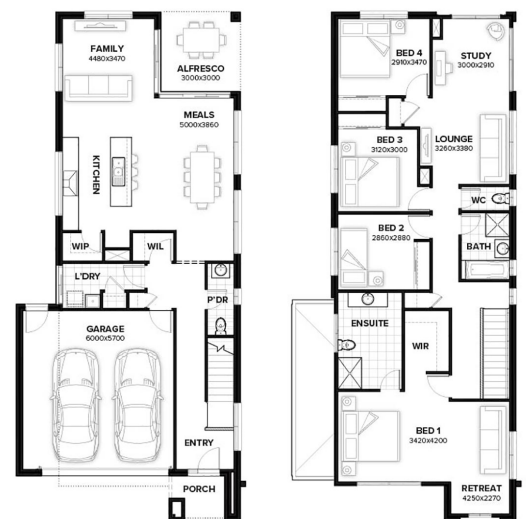
DIAMANTINA, LOGAN RESERVE.

SIZE: 420m²



PACKAGE INCLUDES:

- 90mm timber frames on all Burbank homes
- Allowances for all site costs (H1 slab and piling)
- Full carpet and tiles; concrete and fan to Alfresco
- LED lighting; Stone benchtops and overheads to Kitchen
- Letterbox; NBN Ready; Council Fees all included
- Driveway; Landscaping; Top soil and instant turf
- Upgraded facade and front door; Ducted Air Conditioning



For more information

Phone: 0412 024 418 | Email: sales@diamantinaliving.com.au

Proudly Developed By

LACEY
DEVELOPMENTS

THIS PUBLICATION IS FOR INFORMATION PURPOSES ONLY AND IS INTENDED TO BE GENERAL IN NATURE. ALL IMAGES, ILLUSTRATIONS AND RENDERS ARE FOR PRESENTATION PURPOSES, ARE NOT ACTUAL IMAGES OF THE DEVELOPMENT AND ARE INTENDED TO BE INDICATIVE ONLY. EVERY CARE IS TAKEN TO ENSURE INFORMATION CONTAINED IN THIS PUBLICATION IS ACCURATE AT THE DATE OF PRINTING HOWEVER THE DEVELOPER CANNOT GUARANTEE ITS ACCURACY AFTER THAT TIME. PROSPECTIVE PURCHASERS SHOULD CAREFULLY REVIEW ANY CONTRACT OF SALE, ENDORSED PLANS MAKE THEIR OWN ENQUIRIES AND OBTAIN INDEPENDENT ADVICE BEFORE PROCEEDING. THE LOT SIZES, LAYOUT AND MEANS OF ACCESS MAY CHANGE WITHOUT NOTICE AND THE DEVELOPER RESERVES THE RIGHT TO WITHDRAW OR ALTER ANY LOT OR STAGE LAYOUT AT ANY TIME AT ITS ABSOLUTE DISCRETION.