



Diamantina

LOGAN RESERVE

House and Land Package



4 | 2 | 2

\$486,590

SICILY 22

LOT 10

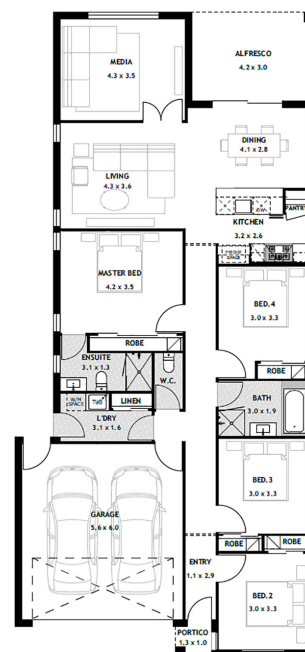
DIAMANTINA, LOGAN RESERVE.

SIZE: 350m²

Image not found or type unknown

PACKAGE INCLUDES:

- Engineer designed waffle pod slab to suit up to 'M' soil classification
- Single phase power & water connection from consumer connection point
- Clay bricks from builders standard range
- Powder coated aluminium windows and sliding glass doors including keyed locks barrier screens (excludes to hinged doors)
- 20mm engineered stone benchtops
- Close coupled back to wall toilet suites with soft close seats
- Hot Water System (Electric)
- Energy efficient LED lighting
- Water efficient showerheads



For more information

Phone: 0412 024 418 | Email: sales@diamantinaliving.com.au

Proudly Developed By

LACEY
DEVELOPMENTS

THIS PUBLICATION IS FOR INFORMATION PURPOSES ONLY AND IS INTENDED TO BE GENERAL IN NATURE. ALL IMAGES, ILLUSTRATIONS AND RENDERS ARE FOR PRESENTATION PURPOSES, ARE NOT ACTUAL IMAGES OF THE DEVELOPMENT AND ARE INTENDED TO BE INDICATIVE ONLY. EVERY CARE IS TAKEN TO ENSURE INFORMATION CONTAINED IN THIS PUBLICATION IS ACCURATE AT THE DATE OF PRINTING HOWEVER THE DEVELOPER CANNOT GUARANTEE ITS ACCURACY AFTER THAT TIME. PROSPECTIVE PURCHASERS SHOULD CAREFULLY REVIEW ANY CONTRACT OF SALE, ENDORSED PLANS MAKE THEIR OWN ENQUIRIES AND OBTAIN INDEPENDENT ADVICE BEFORE PROCEEDING. THE LOT SIZES, LAYOUT AND MEANS OF ACCESS MAY CHANGE WITHOUT NOTICE AND THE DEVELOPER RESERVES THE RIGHT TO WITHDRAW OR ALTER ANY LOT OR STAGE LAYOUT AT ANY TIME AT ITS ABSOLUTE DISCRETION.